



Data Sources: Publicly Available Indicators, 2019–2025  
Analysis by Samantha Matlin, PhD and Ashley Trocle, MPH

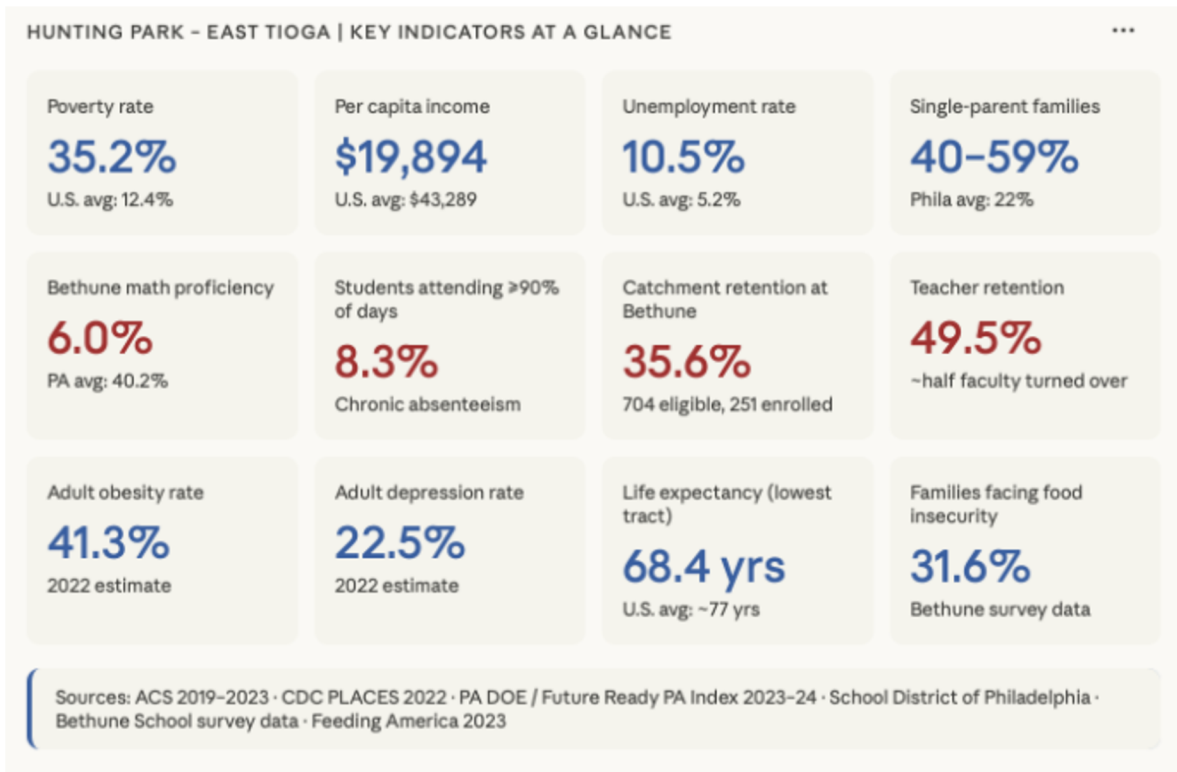
# Neighborhood Indicators: Place-Based Data Summary

Hunting Park–East Tioga Neighborhood | Mary McLeod Bethune School Catchment Area

## Overview

The Hunting Park–East Tioga neighborhood in North Philadelphia presents a compelling case for a community-led place-based catalytic investment. **North10 Philadelphia is anchored within the Mary McLeod Bethune School (K–8) catchment, with approximately 6,952 residents.** Their connective work demonstrates concentrated, persistent need across multiple domains – while also reflecting the resilience, civic infrastructure, and community assets that make sustained change possible.

This briefing synthesizes publicly available data across **four indicator categories – Social Safety, Educational Youth Empowerment, Neighborhood Revitalization, and Community Environmental Health** – to help neighborhood partnerships assess the case for effective programming, identify priority leverage points, and determine productive next steps, including meaningful engagement of the community.



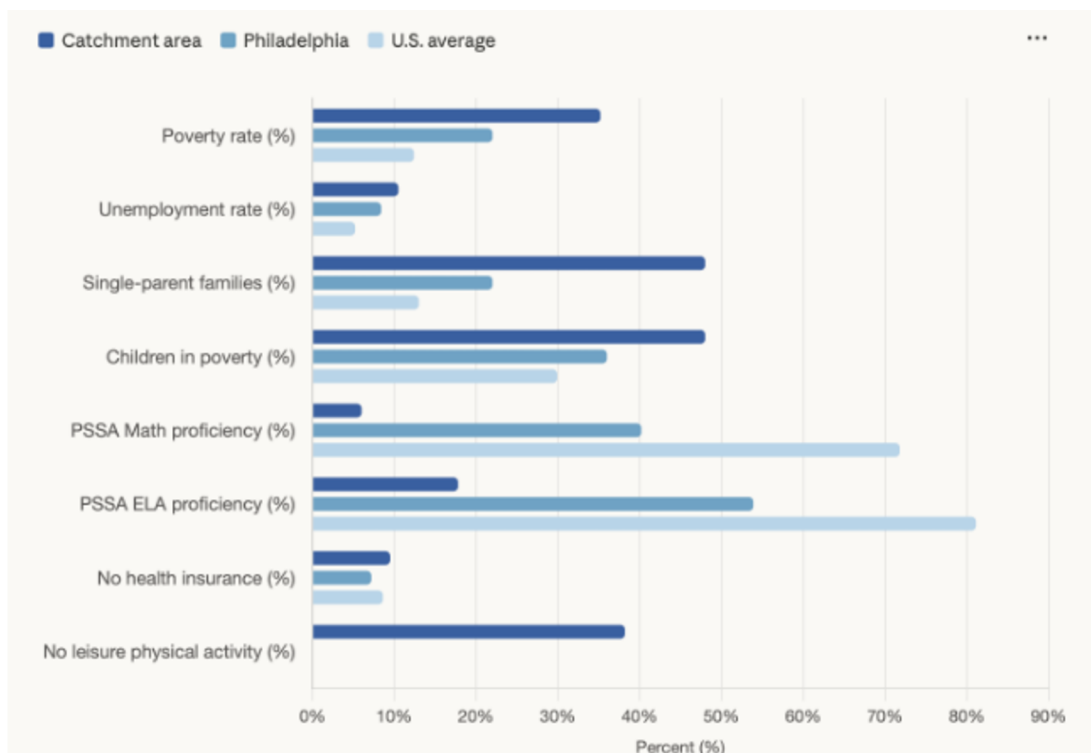
# Social and Safety Indicators

The neighborhood faces deep, persistent poverty with compounding social stressors.

The catchment area's **poverty rate of 35.2%** is nearly three times the **national average (12.4%)** and well above **Philadelphia's citywide rate of 22%**.

The neighborhood has faced **poverty rates above 20%** for at least 30 years. **Per capita income is \$19,894**, compared to **\$37,669 citywide** and **\$43,289 nationally**.

An estimated **40–59% of families** in certain block groups are single-parent households with children, compared to **22% citywide** and **13% statewide**.



Crime data from the Philadelphia Police Department (June–October 2025) documents **ongoing public safety challenges** within the catchment, including **aggravated assault, robbery, shooting incidents, auto theft, and burglary**. Roughly **one in four Bethune students reports they almost never feel safe** in the surrounding neighborhood.

**Illegal dumping, measured in 2025, is elevated** relative to regional benchmarks. The litter index (2017–2018) places the neighborhood among the **highest-rated areas in Philadelphia for visible disorder**.

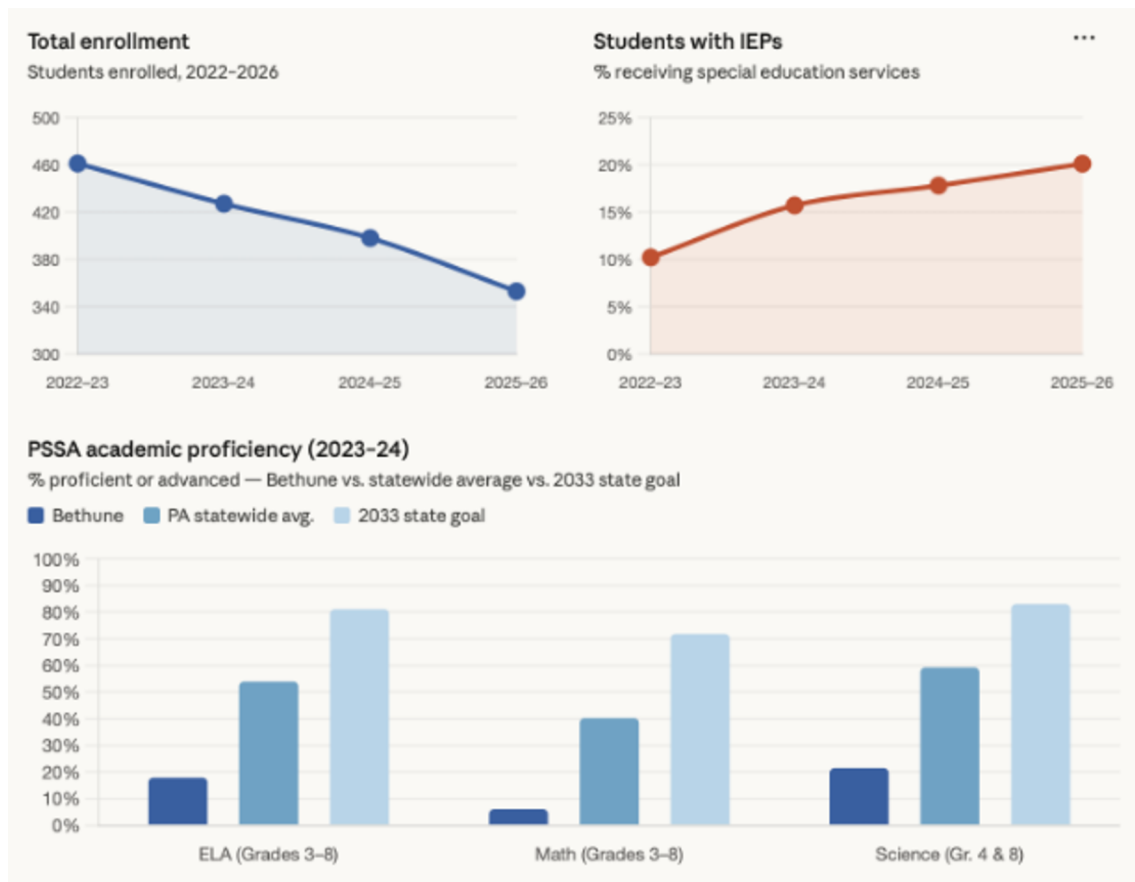
**Incarceration data** from the Opportunity Atlas (cohort born 1978–1983) shows rates of **4–7% for individuals raised in low-income households in the catchment** – well above national norms – reflecting the long-term consequences of concentrated disadvantage and underinvestment.

# Educational Youth Empowerment Indicators

Bethune School reflects the full weight of neighborhood disadvantage — and is a critical focal point for change.

**Mary McLeod Bethune School (K–8)** enrolls **353 students in 2025–2026**, down from 461 in 2022–2023 — a **23% enrollment decline over four years**. The student body is **100% economically disadvantaged** (Community Eligibility Provision), with 74% Black/African American and 23% Hispanic/Latino students. The share of students with IEPs has risen from 10.2% to 20.1% over the same period, indicating growing special education needs.

Only **35.6%** of the **704 school-age children living within the Bethune catchment** boundary actually attend the school. The majority attend charter schools or other district schools, reflecting both school choice dynamics and, potentially, concerns about school quality and safety. **This enrollment attrition matters:** it limits the school's capacity to serve as a neighborhood anchor institution.



Academic performance on Pennsylvania's PSSA (2023–2024) is deeply concerning. Proficiency rates are: **ELA — 17.8%** (statewide average: 53.9%), **Math — 6.0%** (statewide: 40.2%), and **Science — 21.4%** (statewide: 59.2%). All three subject areas failed to meet interim improvement targets, and current performance is far below the statewide 2033 goals. **Grade 6–8 math proficiency stands at just 2.1%.**

**School climate data from student surveys (78.6% response rate)** is instructive: **22.7%** of students report they almost never enjoy being in school, **21%** report they almost never feel a sense of belonging, and **24%** report they almost never feel safe in the surrounding neighborhood. **Only 8.3% of students attended at least 90% of instructional days** in 2023–2024 — a chronic absenteeism rate that is among the most alarming indicators in this briefing. **Teacher retention was 49.5%**, meaning roughly half the faculty turned over in a single year.

**Food insecurity compounds these challenges: 31.6% of responding families** reported low or very low food security, and only 58–64% of students participate in free school meals despite 100% eligibility.

**The Child Opportunity Index (COI)** rates the Bethune catchment area at the lowest tier nationally — **"Very Low"** — meaning children here have significantly less access to the neighborhood conditions associated with healthy development than their peers across the country.

---

## Neighborhood Revitalization Indicators

Unemployment, housing cost burden, and commercial vacancy signal an underinvested built environment.

**Unemployment among residents age 16 and older** ranges from **8–18%** across census block groups within the catchment, compared to **8.4%** citywide and **5.2%** nationally. Labor force participation among **older adults (65+)** is particularly low, with some tracts showing as little as **1–6%** employed — reflecting both health constraints and limited economic opportunity.

**Housing cost burden is severe and widespread.** Median owner costs as a percentage of household income reach **22%** or more in the highest-burden areas. Renter cost burden is similarly elevated, with median renter costs consuming **30–36.5%** or more of household income in several block groups. These figures point to significant housing insecurity among both renters and owners. Homeownership rates vary considerably across the catchment, with some block groups showing high rental density and limited wealth-building through property ownership.

**Commercial vacancy rates reached up to 19%** of business addresses in Q2 2025 in portions of the catchment, indicating limited local economic activity and reduced walkable access to goods and services.

Traffic safety data from the Vision Zero Plan identifies multiple streets within the catchment on **Philadelphia's High Injury Network, with documented fatal and serious injury crashes.** Projects are in progress, but significant infrastructure gaps remain.

# Health and Environmental Indicators

Residents face significant health burdens shaped by environmental conditions, limited green space, and chronic disease.

Life expectancy in the catchment ranges from **68.4 to 75.6 years** across census tracts (CDC, 2010–2015), with the lowest-performing **tract roughly 10 years below the national average**.

**Key health indicators** averaged across catchment tracts (2022) include:

- **Obesity:** 41.3% of adults
- **Depression:** 22.5% of adults
- **Diabetes:** 20.6% of adults
- **Asthma:** 12.4% of adults
- **No leisure-time physical activity:** 38.2% of adults
- **Current cigarette smoking:** 22.7% of adults

While **90.5% of residents have health insurance** (predominantly **public coverage at 66.9%**), preventive care utilization leaves room for improvement, with **79.1% reporting a routine checkup** in the past year.

The neighborhood sits within **one of Philadelphia's highest Heat and Health Index tiers (63.5+) for 2024**, indicating extreme vulnerability to heat-related illness — a growing concern given climate change. **The NDVI (Normalized Difference Vegetation Index) and 2015 tree canopy data confirm** limited green space and vegetation throughout the catchment, both a **heat island risk factor** and a **quality-of-life deficit**.

For youth specifically, the **catchment's zip code recorded 900+ childhood asthma emergency department visits in 2022** alone. Pennsylvania **state data (ages 12–17)** shows **20.5% of youth reported a major depressive episode** in the past year, and **10.7% reported illicit drug use** — figures likely underestimating neighborhood-level risk given regional concentration effects.

---

## Summary on The Case for Place-Based, Community-led Investment

**The Hunting Park–East Tioga catchment presents a high-need, high-potential opportunity for place-based outcomes.** The concentration of poverty, educational underperformance, health burden, and environmental stress is severe — but so is the density of existing community infrastructure, institutional anchors, and dedicated local leadership. **Publicly available data provides a strong baseline** for decision-making.

*Data sources: U.S. Census Bureau / American Community Survey (2019–2023); CDC PLACES (2022); Open Data Philly; Pennsylvania Department of Education / Future Ready PA Index; School District of Philadelphia (philasd.org); Philadelphia Police Department; USDA Food Access Research Atlas; Feeding America; Opportunity Atlas; Child Opportunity Index (diversitydatakids.org); EPA EJScreen; NOAA; Vision Zero Plan; NDVI 2024; CDC Heat and Health Index 2024*